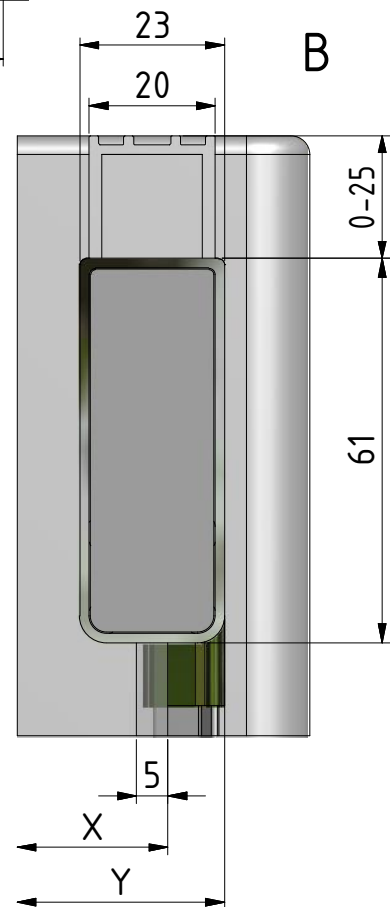
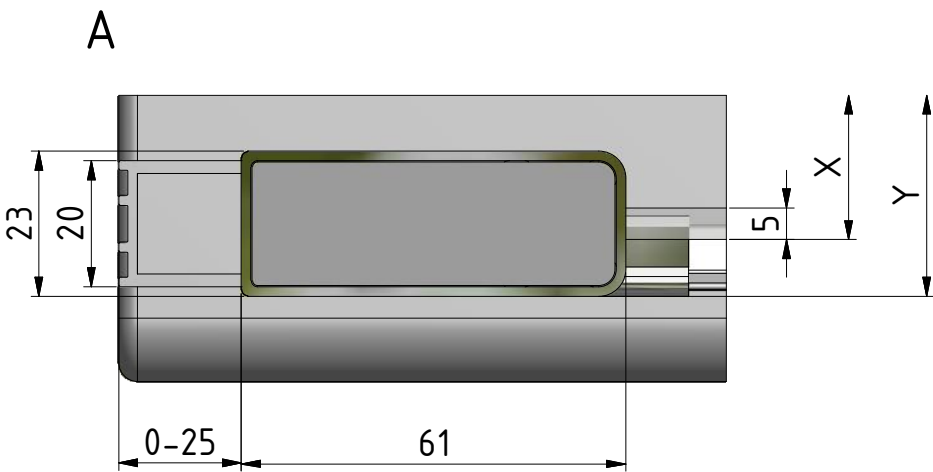
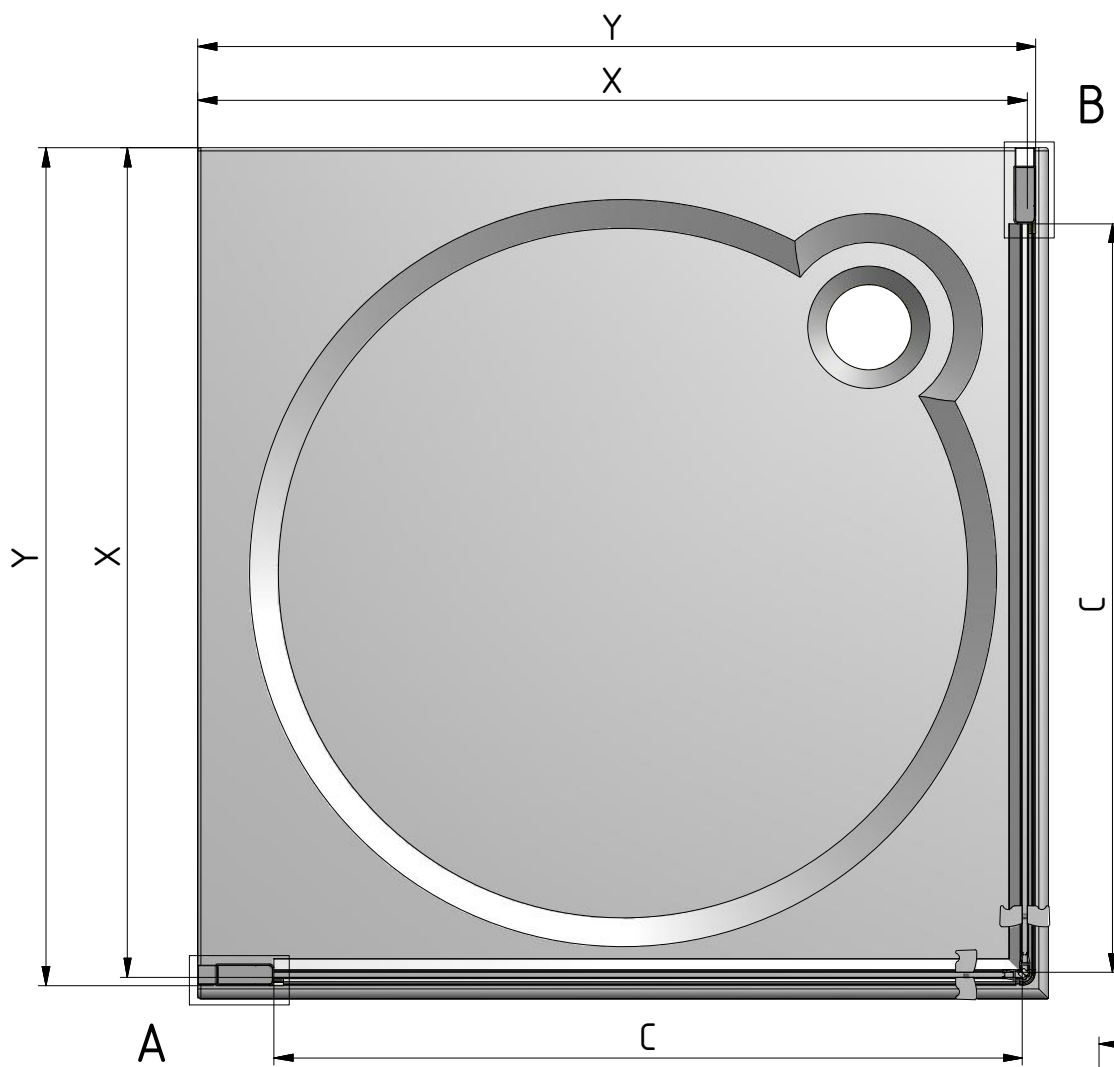


# LZC01+LZC01



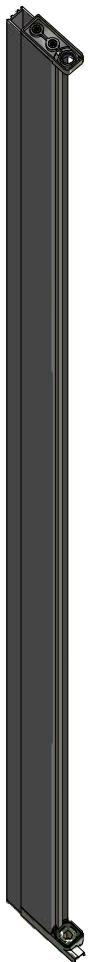
Roltechnik s.r.o.; Czech Republic, 56933 Třebořov 160,  
tel.: +420 461 324 301/302, fax: +420 461 324 297,  
<http://www.roltechnik.com>; e-mail: [objednavky@roltechnik.cz](mailto:objednavky@roltechnik.cz)

2019/09/02  
Rev.:03  
MA6324

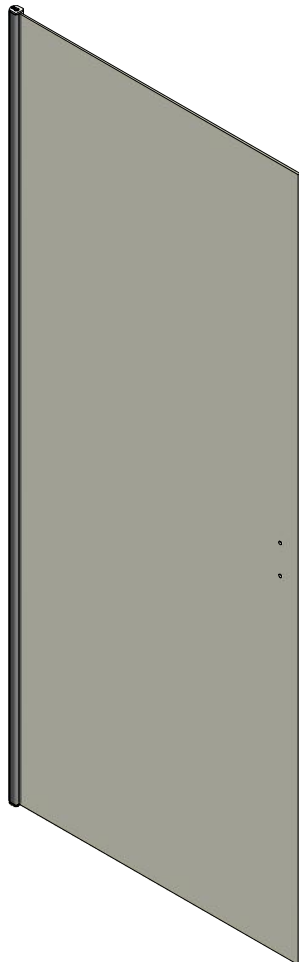


| LZC01+LZC01 |                |                |        |
|-------------|----------------|----------------|--------|
| TYP         | X (MIN-MAX) mm | Y (MIN-MAX) mm | C (mm) |
| 800         | 758-783        | 767-792        | 690    |
| 900         | 858-883        | 867-892        | 790    |
| 1000        | 958-983        | 967-992        | 890    |

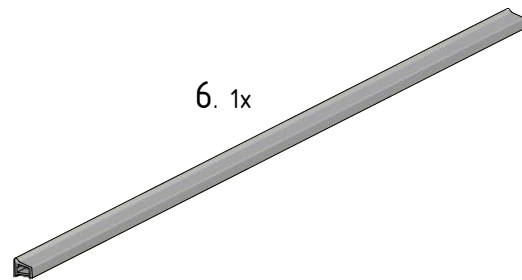
1. 1x



3. 1x



6. 1x



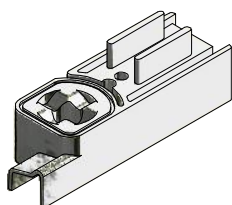
7. 1x



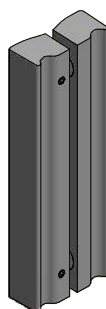
25. 1x  
MA2969



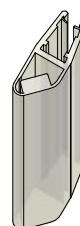
24. 1x  
P4166



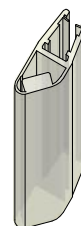
10. 1x  
P4089



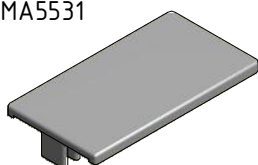
11. 1x  
MA5938



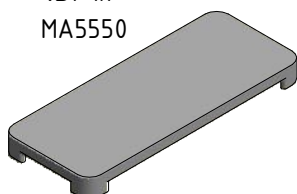
12. 1x  
MA5939



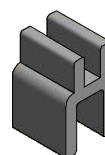
13. 1x  
MA5531



15. 1x  
MA5550



16. 1x  
M1916



17. 3x  
M0811  
Ø3,9x38



18. 3x  
M0511



19. 3x  
M0806  
Ø3,5x9,5



20. 3x  
M1907



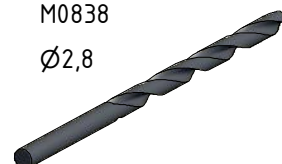
21. 1x  
M0808

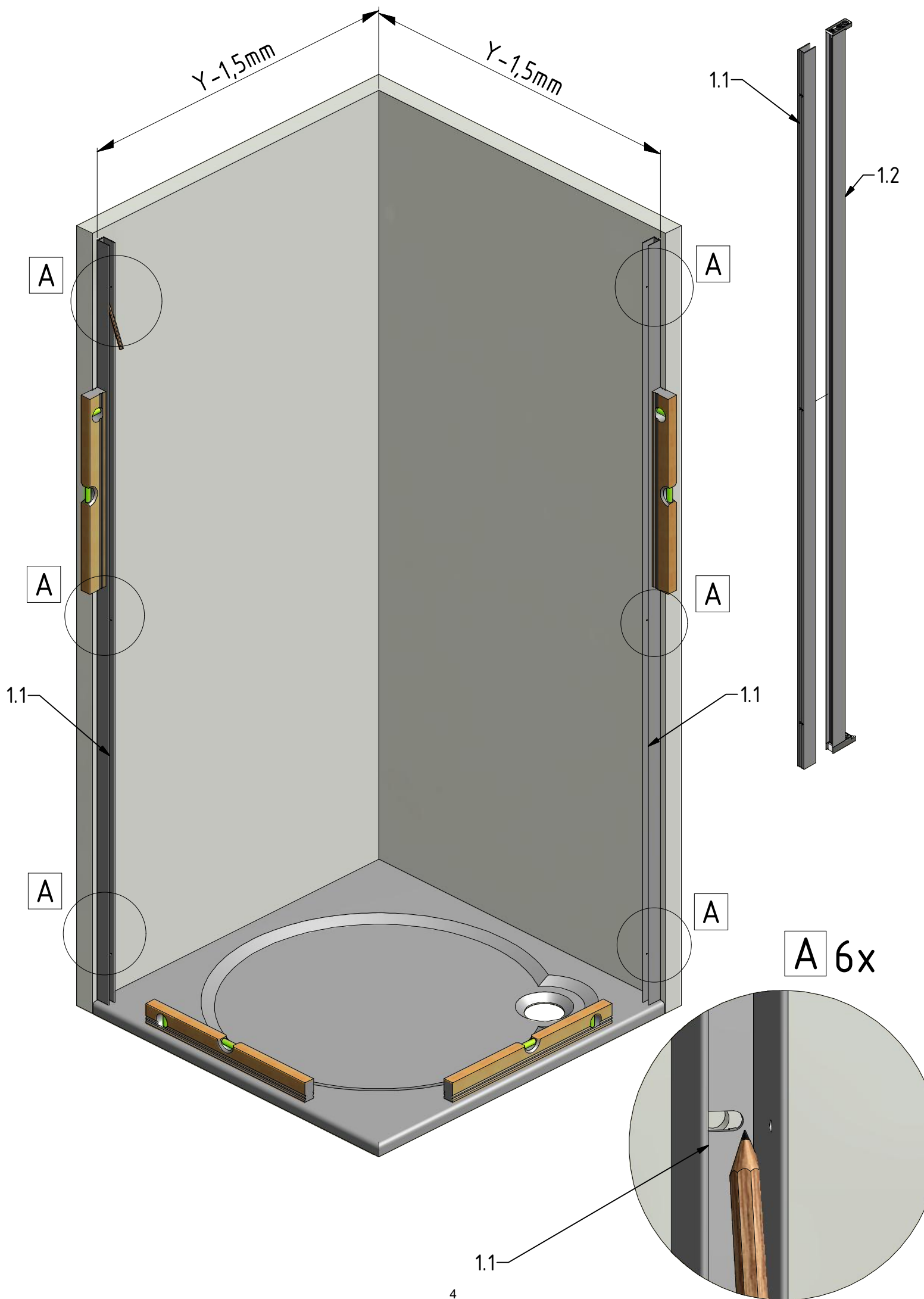


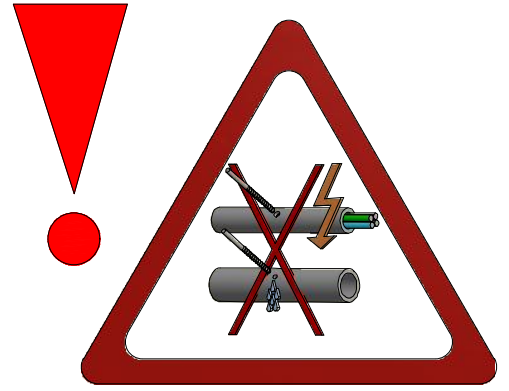
22. 3x  
M0768



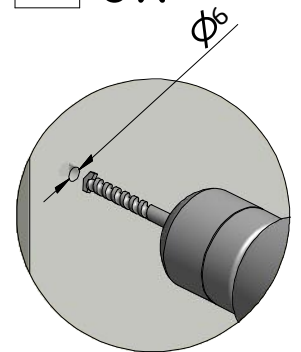
23. 1x  
M0838  
Ø2,8



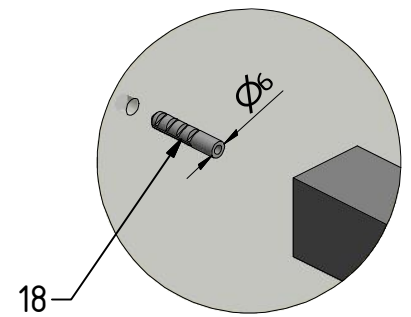




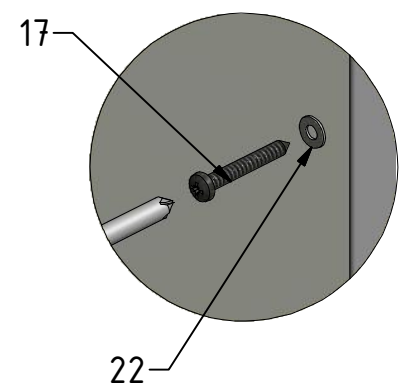
**B** 6x



**C** 6x

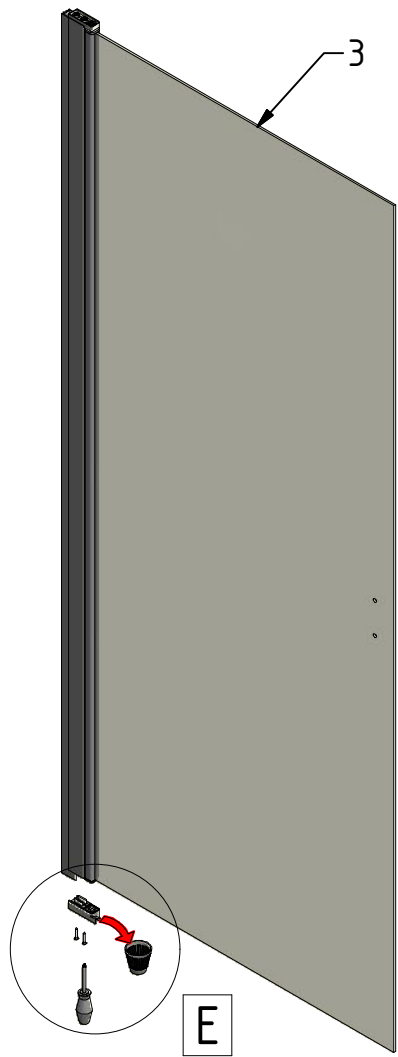


**D** 6x

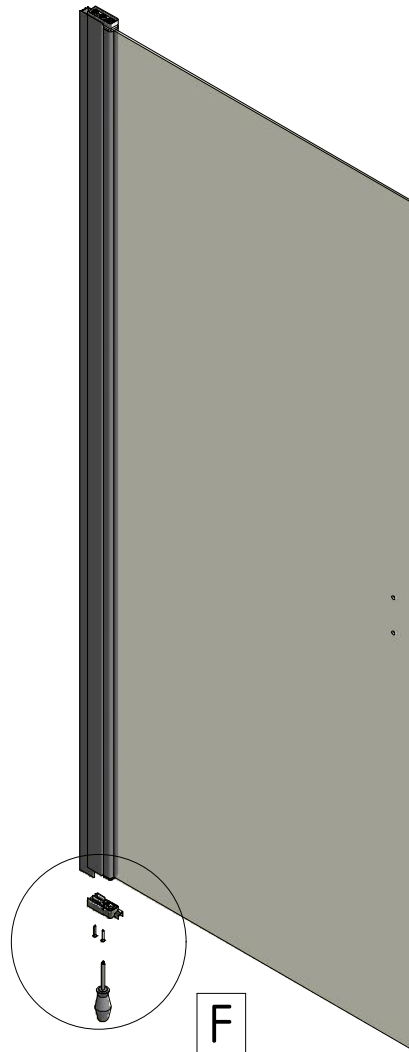


# Postup předělání předmontované LZC01 z levé na pravou variantu

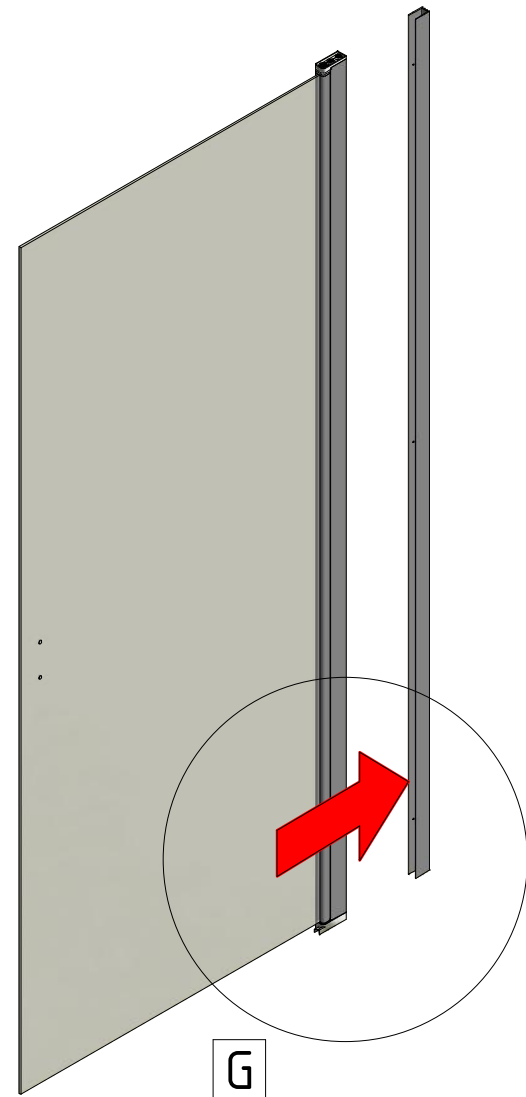
I. Levá varianta předmontovaná



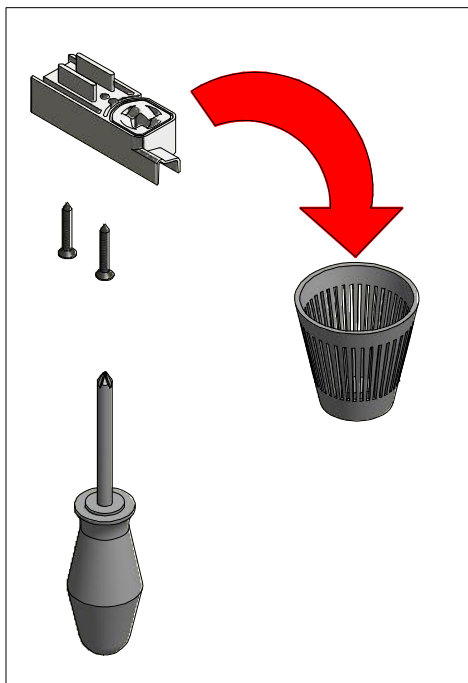
II. Pravá varianta změna komponenty



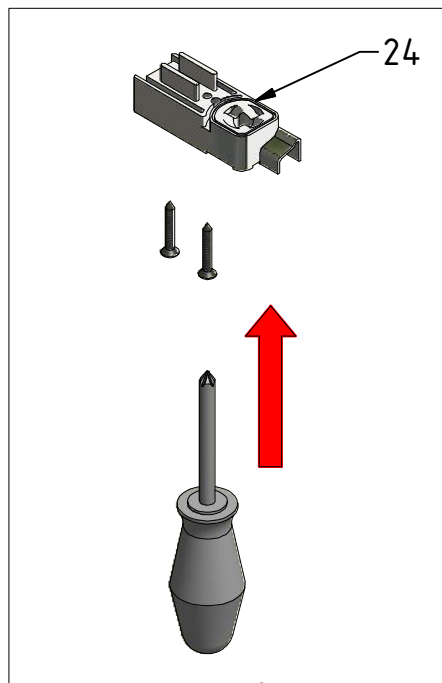
III. Montáž Pravé varianty



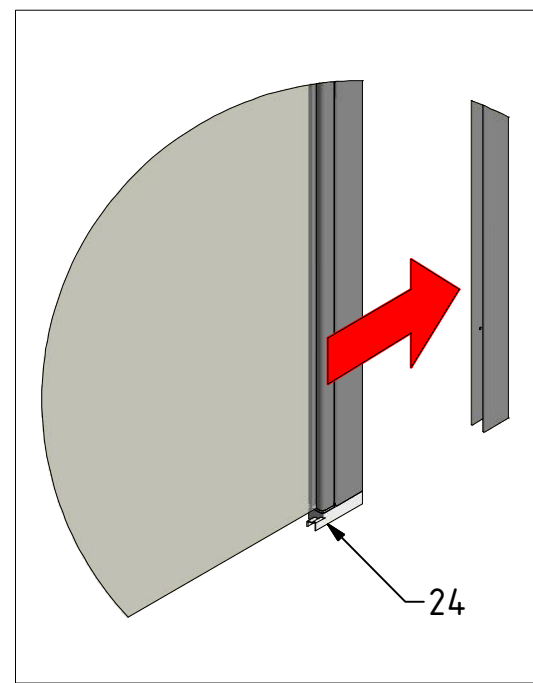
E

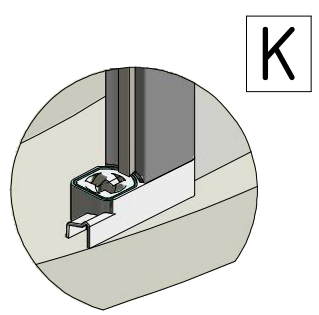
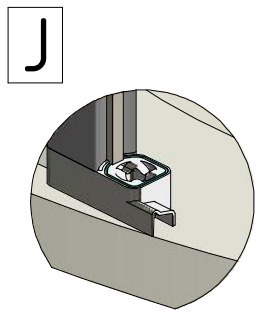
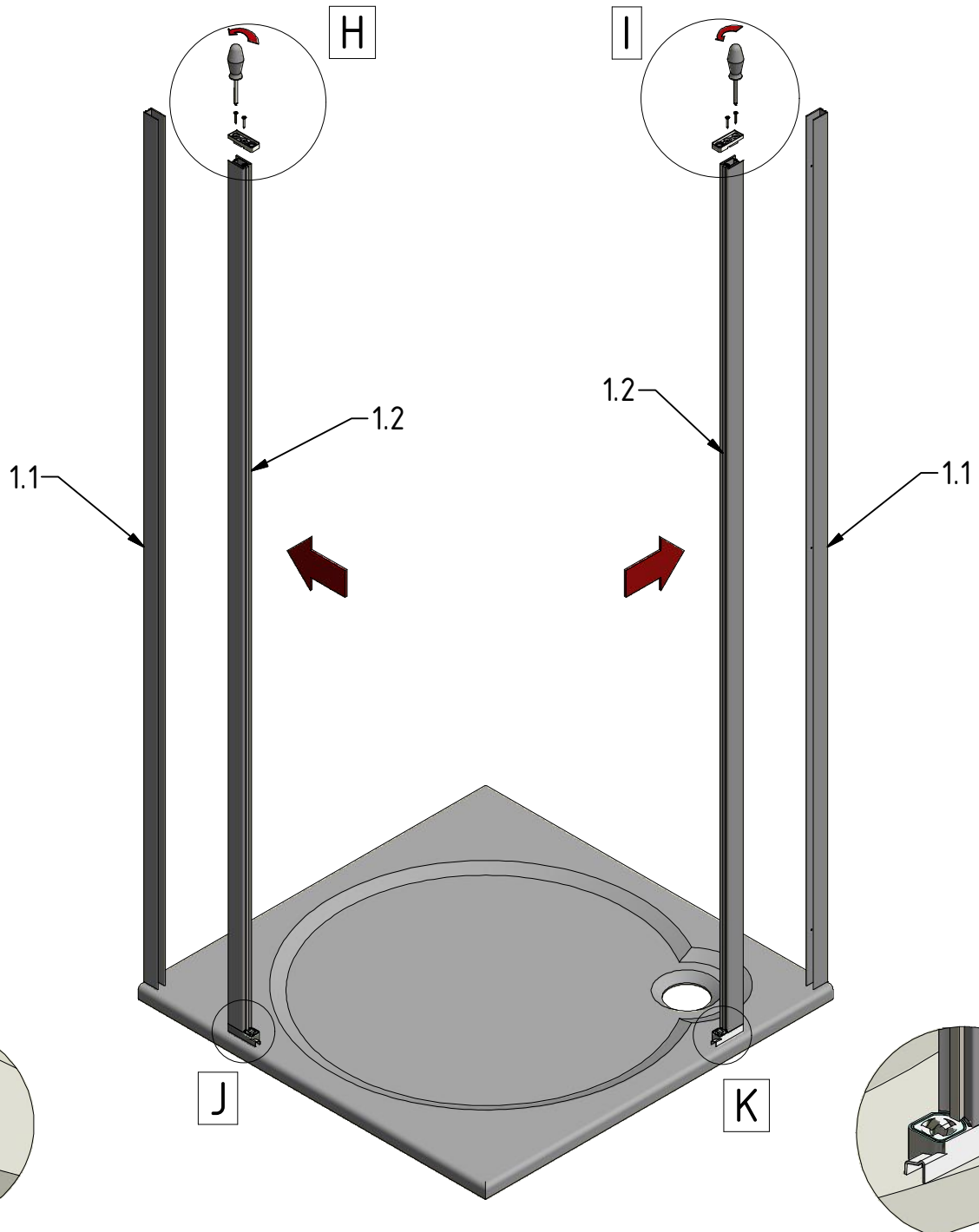
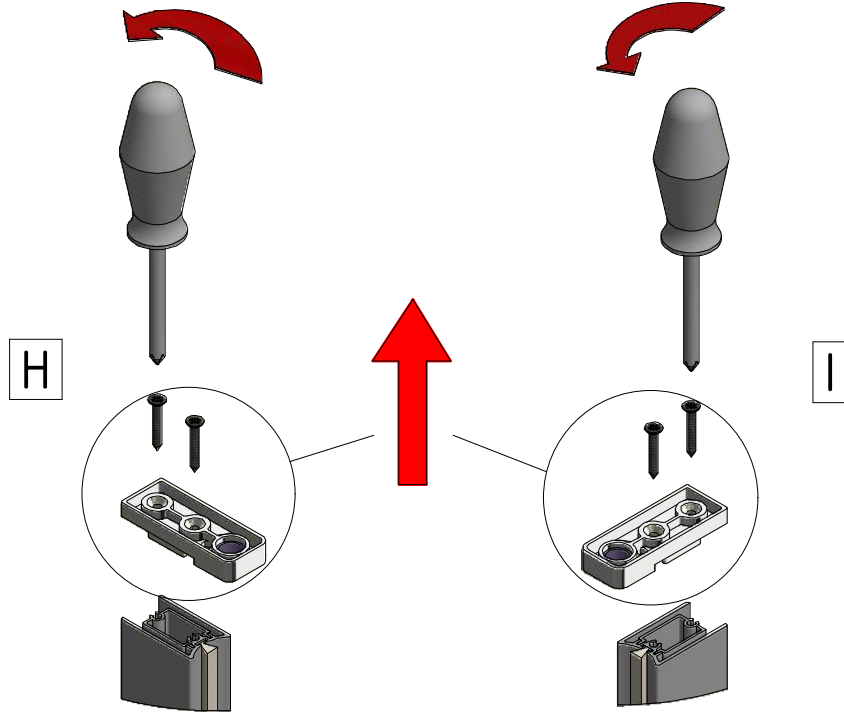


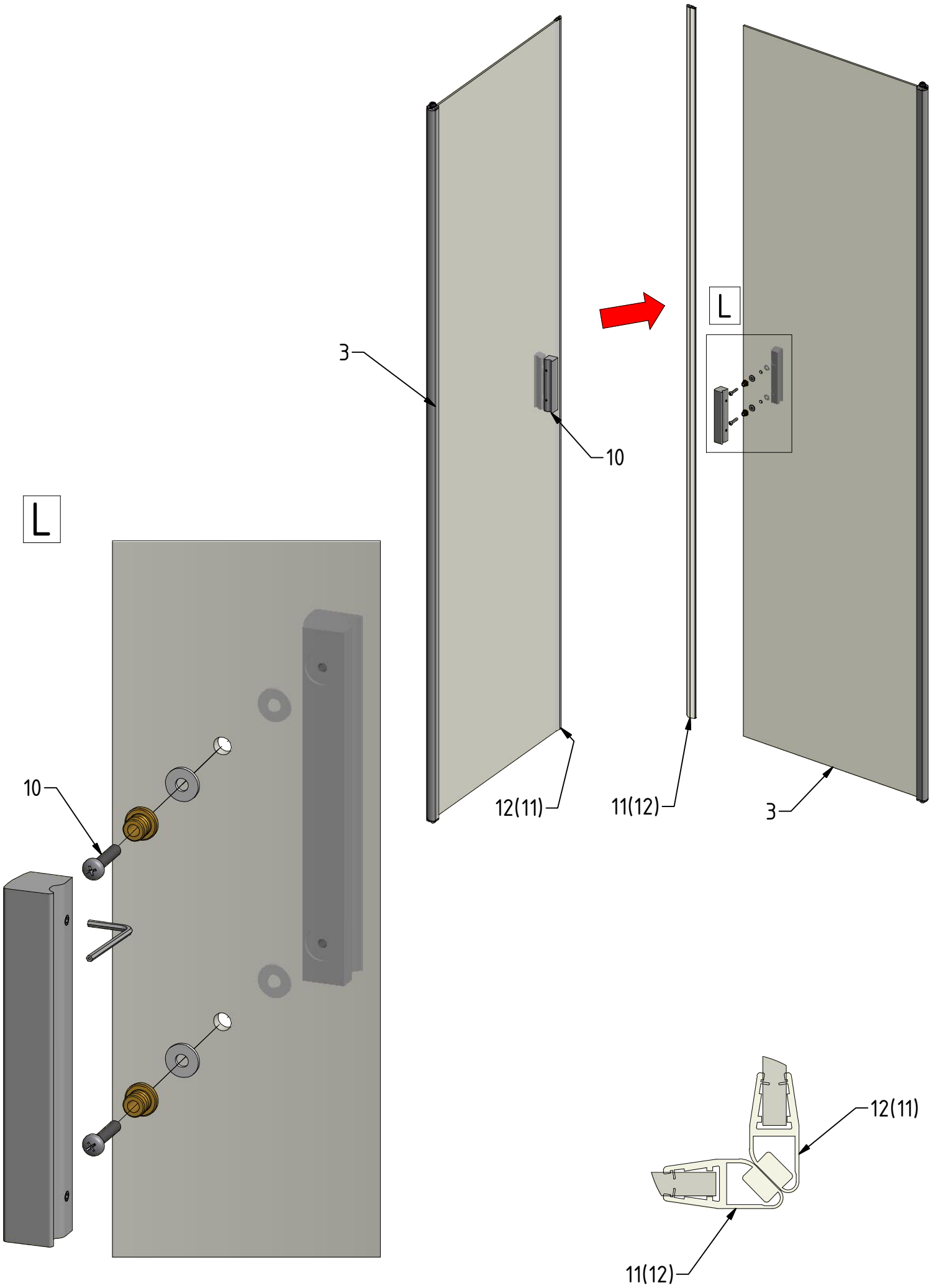
F



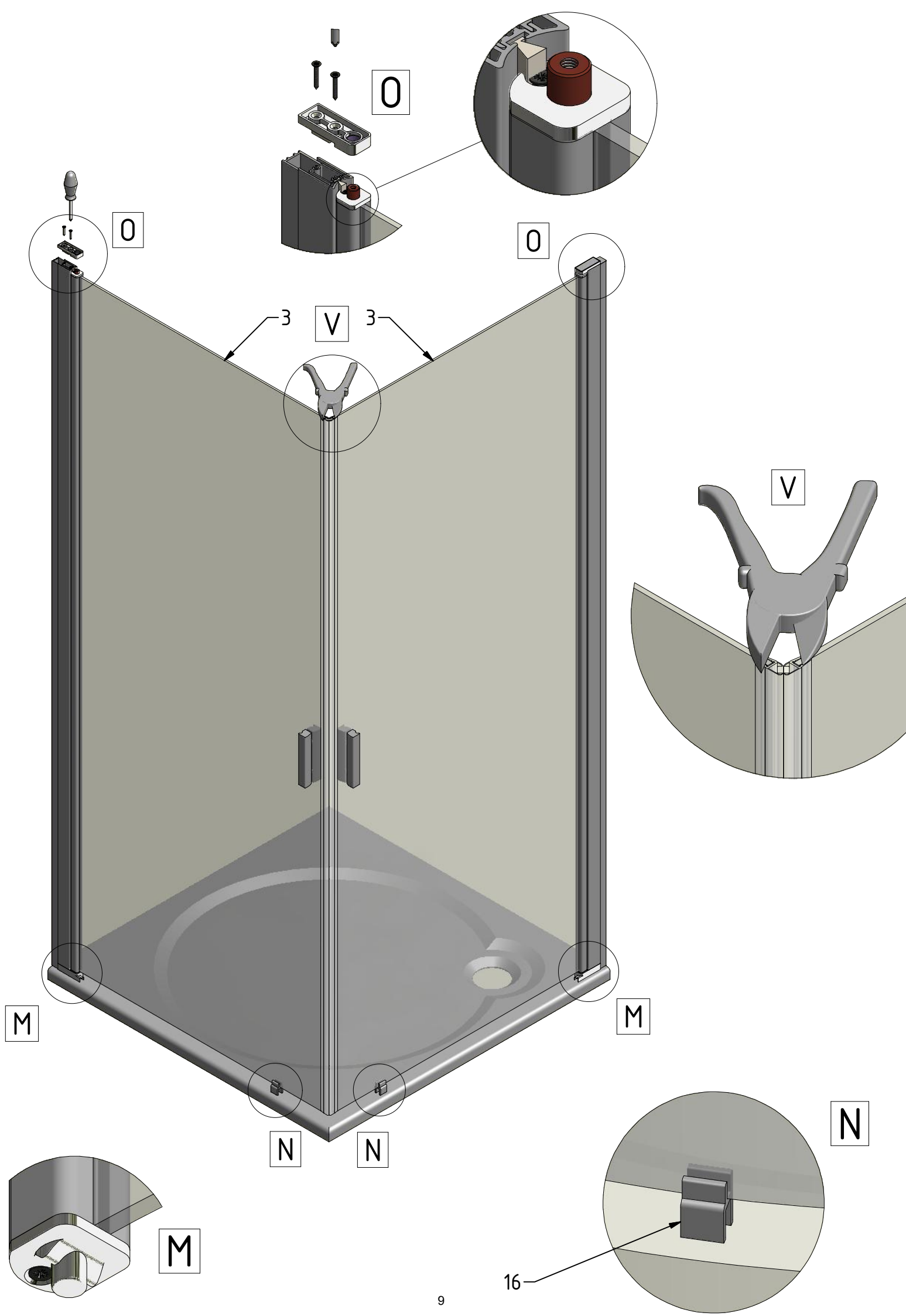
G



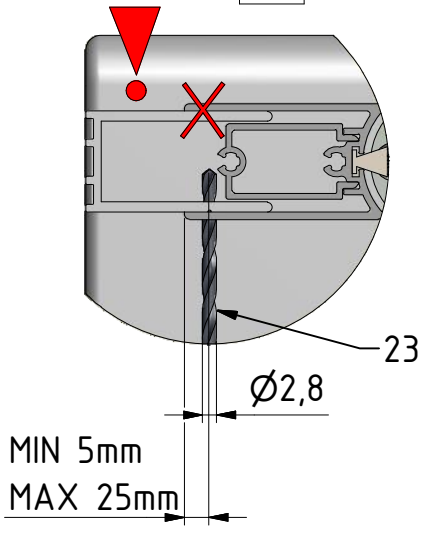




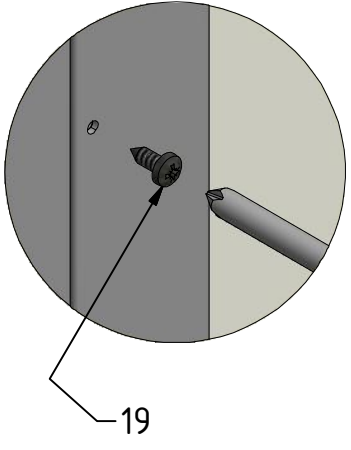




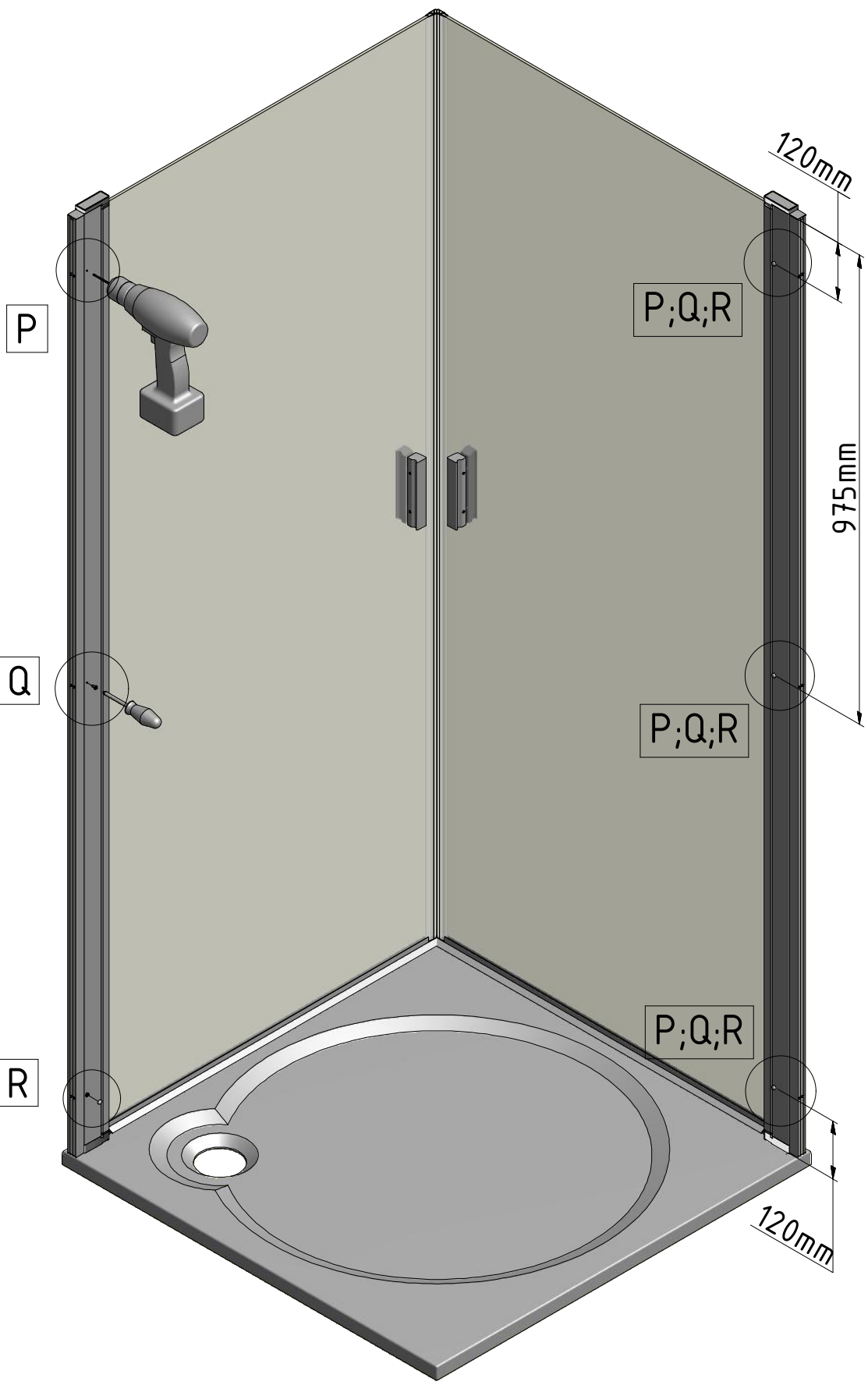
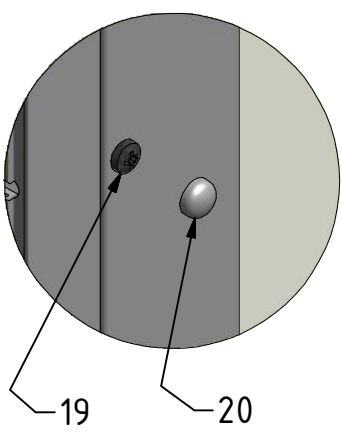
P

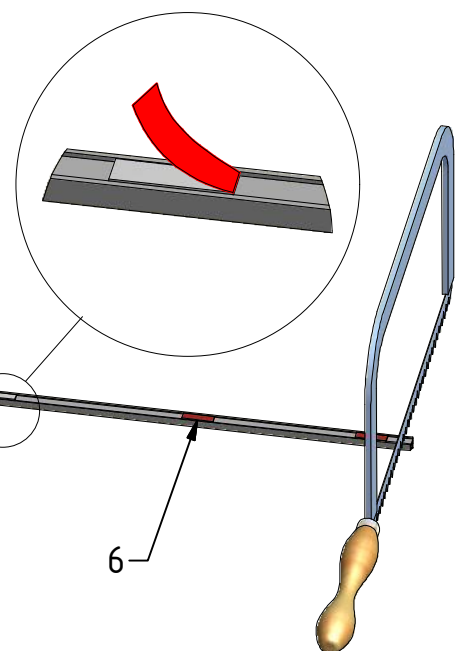
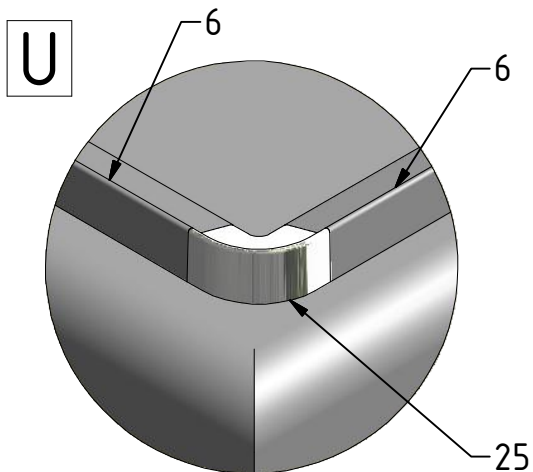
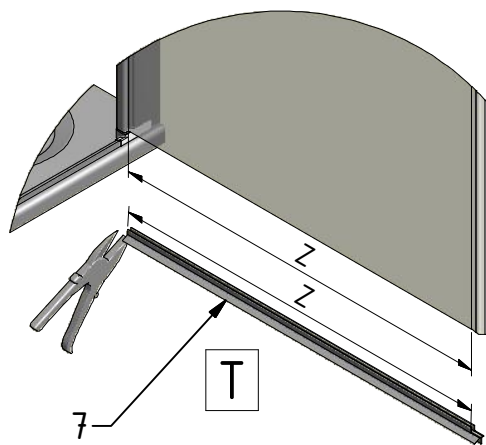
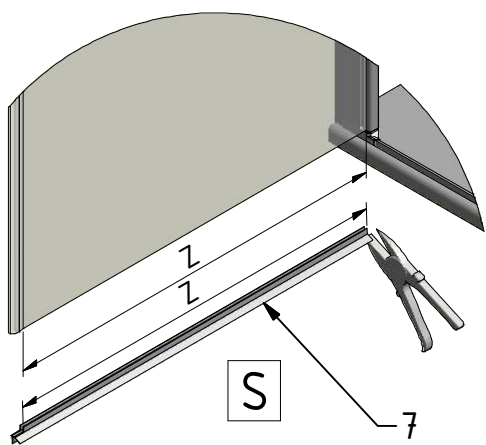
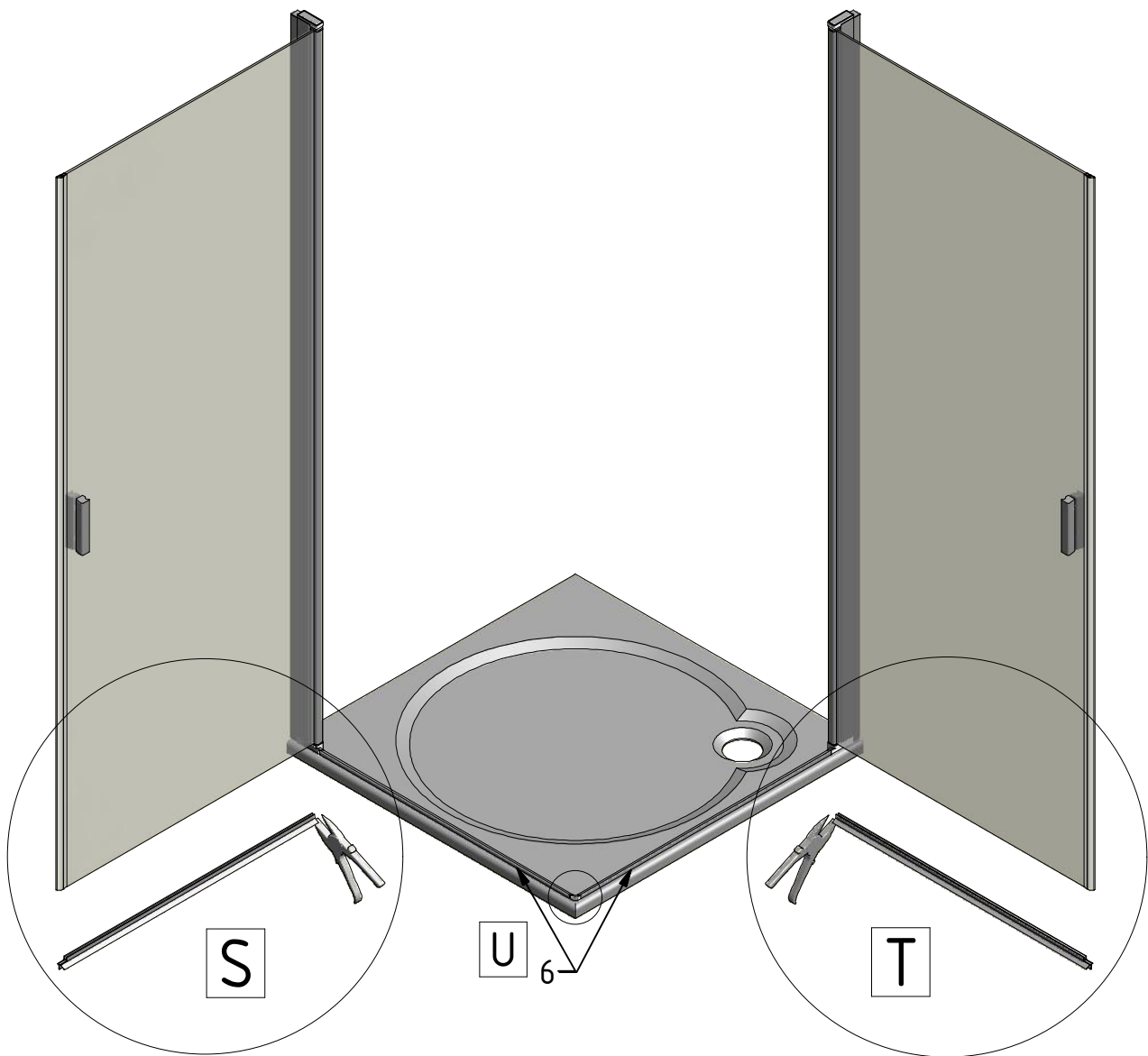


Q

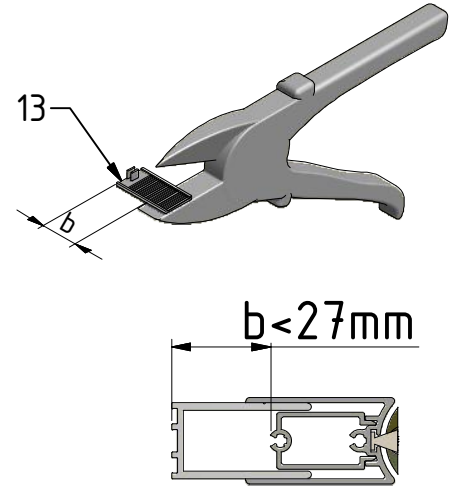
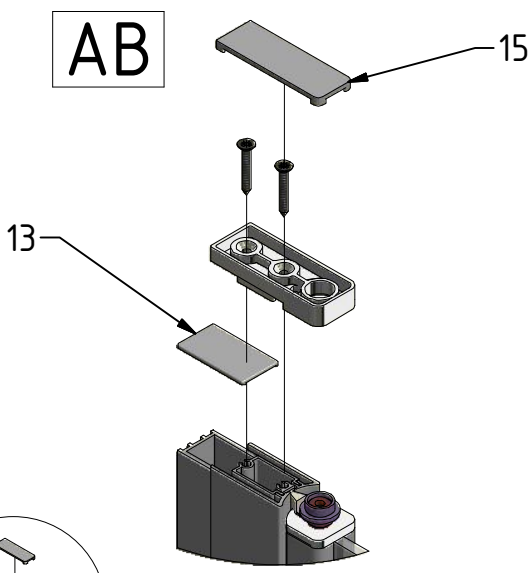


R

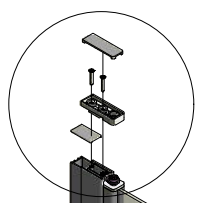




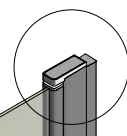
AB

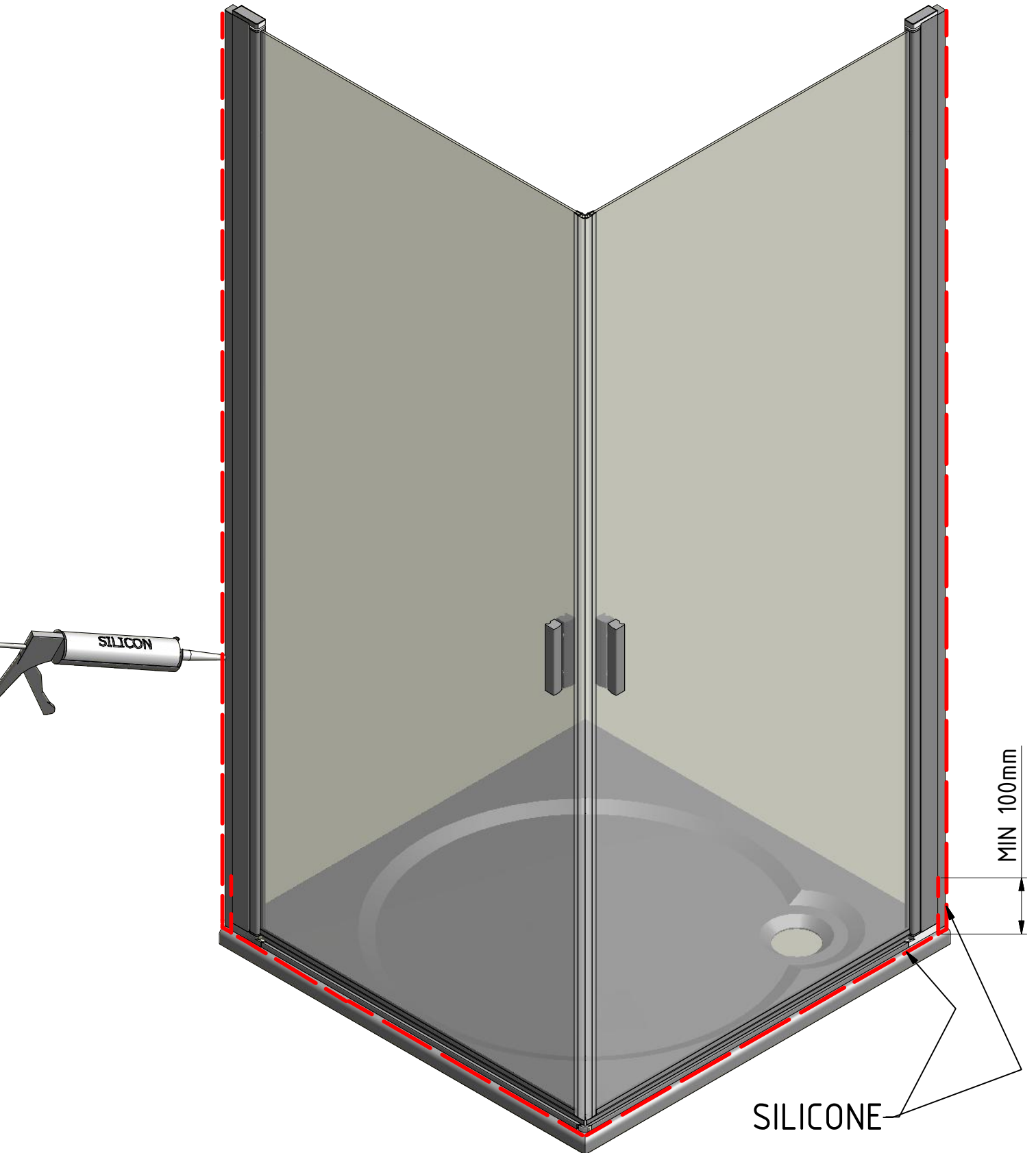


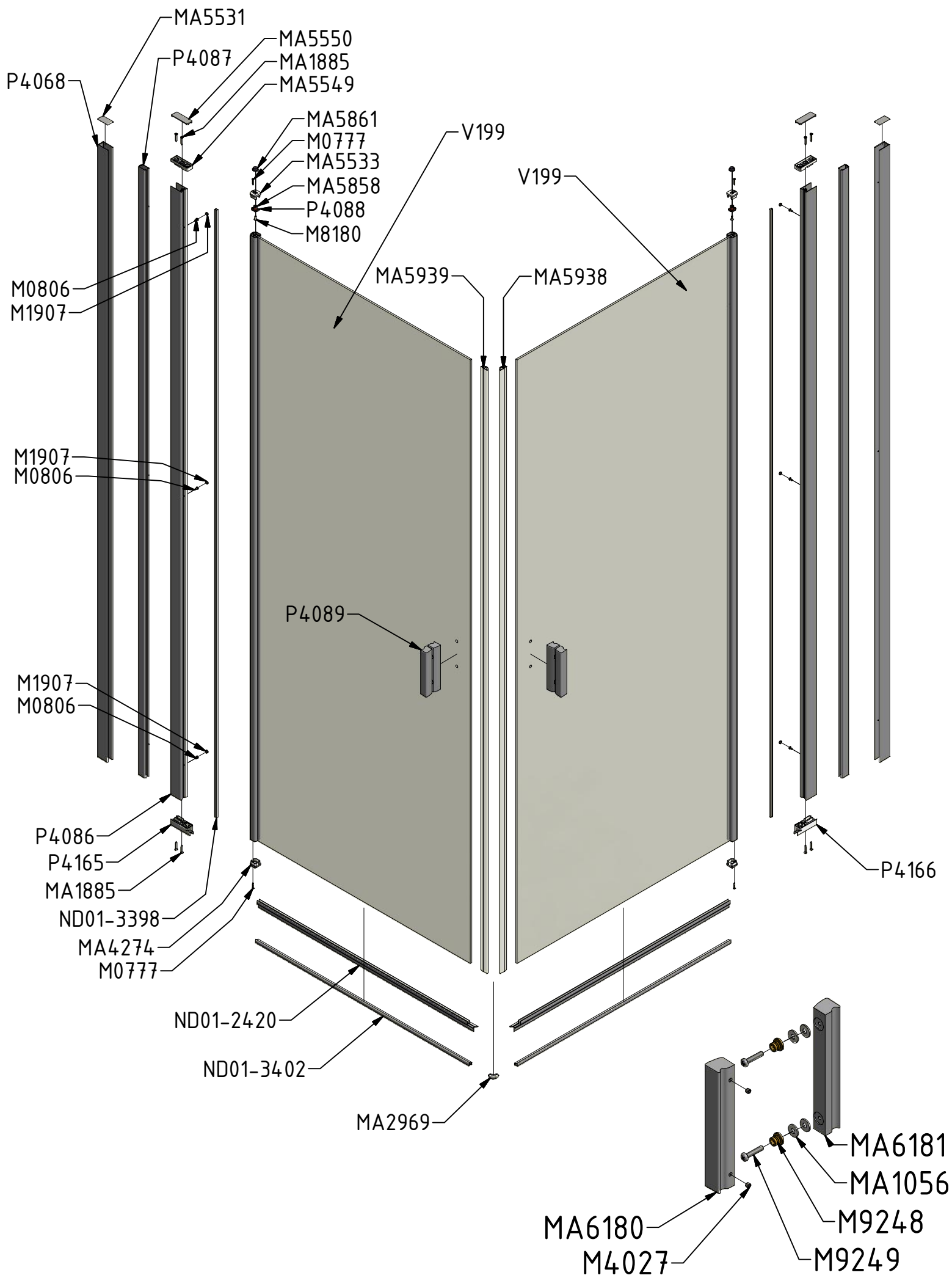
AB



AB







|      |      |                      |                 |
|------|------|----------------------|-----------------|
| V199 | 800  | brillant/transparent | ND02-0772-00-02 |
|      | 900  |                      | ND02-0773-00-02 |
|      | 1000 |                      | ND02-0774-00-02 |

